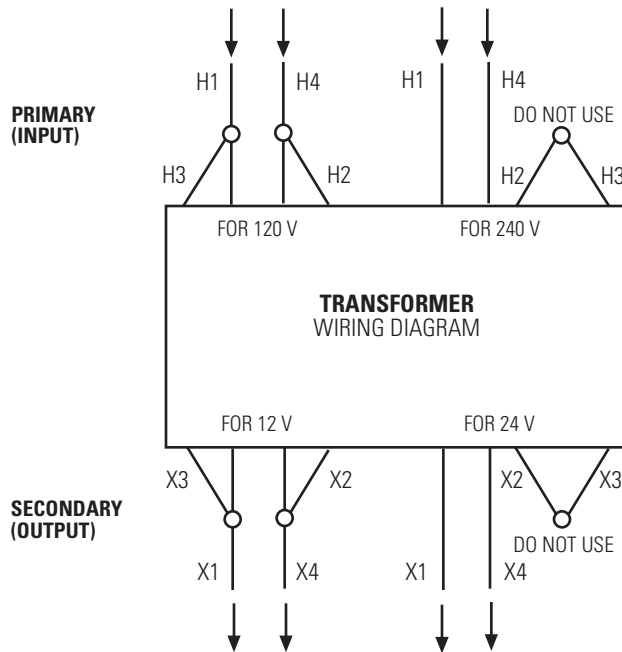


Primary Voltage 120V or 240V  
Secondary Voltage 12V or 24V  
NEMA Type 3 enclosure rated for outdoor use.  
Minimum starting temperature - 40°C  
ANSI/NEMA sound rating under 40 db  
UL and CSA Listed.



•DRAWING NOT TO SCALE•

SPECIFICATIONS

PRODUCT CODE	CAPACITY (W = VA)	DIMENSIONS (H X W X D)	WEIGHT
CLTF 50	50 VA	6.4" X 3.2" X 3.1"	4 LBS.
CLTF 100	100 VA	7.2" X 3.9" X 3.7"	5 LBS.
CLTF 150	150 VA	7.2" X 3.9" X 3.7"	7 LBS.
CLTF 250	250 VA	8.7" X 4.1" X 3.9"	10 LBS.
CLTF 500	500 VA	9.1" X 4.4" X 4.2"	15 LBS.
CLTF 750	750 VA	9.7" X 4.8" X 4.6"	19 LBS.
CLTF 1000	1000 VA	10.5" X 5.5" X 5.2"	24 LBS.
CLTF 1500	1500 VA	11.7" X 5.5" X 5.2"	30 LBS.
CLTF 2000	2000 VA	13.0" X 5.5" X 5.2"	38 LBS.
CLTF 3000	3000 VA	11.5" X 10.4" X 7.2"	55 LBS.

FILL OUT QUANTITIES

CLTF50	CLTF100	CLTF150	CLTF250	CLTF500
CLTF750	CLTF1000	CLTF1500	CLTF2000	CLTF3000

PROJECT NAME	CONTRACTOR
FIXTURE SCHED. TYPE	DISTRIBUTOR
SPECIFIER	REPRESENTATIVE



visit us at :  
www.celestiallighting.com  
e-mail :  
info@celestiallighting.com

14009 Dinard Ave.  
Santa Fe Springs,  
CA 90670

PH (562)•802•8811  
(800)•233•3563  
FX (562)•802•2882